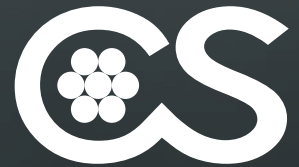


hamma[®]

Performance by design



CableSteel
GROUP

Regatta

MARINE
RIGGING
HARDWARE

Cablesteel per garantire un elevato standard nel settore nautico, si affida agli accessori della linea Hamma Regatta, realizzata con materiali di altissima qualità, utilizzando la più recente tecnologia all'avanguardia, garantendo un'ottima resistenza alla corrosione e una massima durata.

Dimensioni prima e dopo pressatura

diametro fune Ø (mm)	Ø prima della pressatura (mm)	Ø dopo la pressatura (mm)	foro (mm)	profondità foro (mm)
2.5	5.41 - 5.53	4.70 - 4.82	2.6 - 2.8	33
3	6.22 - 6.35	5.44 - 5.56	3.2 - 3.53	33
4	7.42 - 7.54	6.23 - 6.35	4.40 - 4.53	44
5	9.00 - 9.12	7.83 - 7.95	5.40 - 5.53	55
6	12.42 - 12.54	10.95 - 11.12	6.35 - 6.55	66
7	14.18 - 14.30	12.50 - 12.70	7.40 - 7.53	77
8	16.01 - 16.13	14.07 - 14.30	8.40 - 8.53	88
9	17.73 - 17.85	15.70 - 15.90	9.40 - 9.60	99
10	17.73 - 17.85	15.70 - 15.90	10.40 - 10.60	110
11	19.71 - 19.84	17.27 - 17.47	11.88 - 12.08	123
12	21.32 - 21.44	18.82 - 19.05	12.80 - 13.03	132
14	24.88 - 25.00	22.00 - 22.23	14.80 - 15.00	154
16	28.05 - 28.18	25.15 - 25.40	16.80 - 17.00	176
19	34.30 - 34.60	31.44 - 31.75	20.00 - 20.20	209
22	40.21 - 40.46	36.20 - 36.50	23.00 - 23.30	242

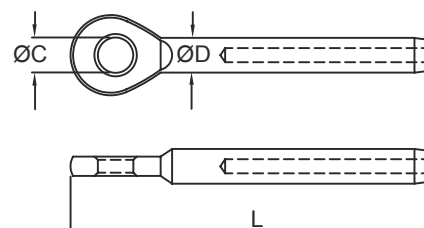


HM-SWNE

Terminale ad occhio

Dati tecnici

Materiale : AISI316 - DIN 1.4408



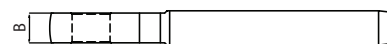
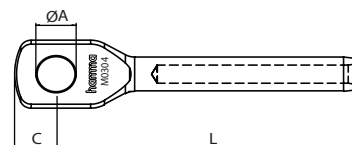
HM- SWNE Codice	dimensione (mm)	ØC (mm)	ØD (mm)	L (mm)	B.L. (kgs)
HM-SWNE-02	2	5.5	5.53	56	850
HM-SWNE-025	2.5	5.5	5.53	56	850
HM-SWNE-03	3	6.5	6.35	62	1,000
HM-SWNE-04	4	8.5	7.54	77	1,350
HM-SWNE-05	5	10.5	9.12	87	2,500



HM-SMEM

Terminale ad occhio

Dati tecnici
Materiale : AISI316 - DIN 1.4401



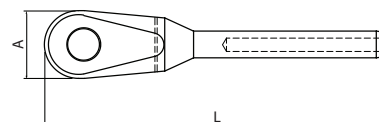
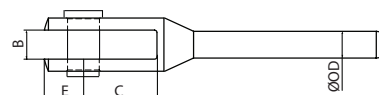
HM-SMEM codice	dimensioni (mm)	ØA (mm)	B (mm)	C (mm)	L (mm)	perno (inch)
HM-SMEM-0304	3	6.8	5.8	8	52	1/4"
HM-SMEM-0405	4	8.5	6.8	10	65	5/16"
HM-SMEM-0505	5	8.5	6.8	10	80	5/16"
HM-SMEM-0506	5	9.8	6.8	10	80	3/8"
HM-SMEM-0606	6	9.8	9.5	12	98	3/8"
HM-SMEM-0607	6	11.5	9.5	14	98	7/16"
HM-SMEM-0708	7	13.2	12	15	112	1/2"
HM-SMEM-0808	8	13.2	12	15	125	1/2"
HM-SMEM-0810	8	16.5	14	18	132	5/8"
HM-SMEM-1010	10	16.5	14	18	158	5/8"
HM-SMEM-1212	12	20	18	21	189	3/4"
HM-SMEM-1414	14	23	21	25	220	7/8"
HM-SMEM-1616	16	26.5	23	28	250	1"
HM-SMEM-1919	19	30	26	30	295	1-1/8"
HM-SMEM-2222	22	33	31	38	336	1-1/4"
HM-SMEM-2626	26	36	32	42	397	1-3/8"



HM-SWLF

Terminale a forcella

Dati tecnici
Materiale : AISI316 - DIN 1.4401



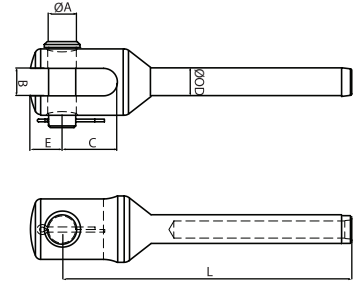
HM-SWLF codice	dimensioni (mm)	A (mm)	B (mm)	C (mm)	E (mm)	L (mm)	ØOD (mm)
HM-SWLF-025	2.5	14	6	15	8	70	5.5
HM-SWLF-03	3	14	6	15	8	70	6.3



HM-SMFM

Terminale a forcella

Dati tecnici
 Materiale : AISI316 - DIN 1.4401



HM-SMFM codice	dimensioni (mm)	ØA (mm)	B (mm)	C (mm)	E (mm)	L (mm)	perno (inch)
HM-SMFM-0405	4	8	8	17	9	78	5/16"
HM-SMFM-0505	5	8	8	17	9.1	89	5/16"
HM-SMFM-0506	5	9.5	10	20	10	95	3/8"
HM-SMFM-0606	6	9.5	10	20	10	105	3/8"
HM-SMFM-0607	6	11	11	22	12	110	7/16"
HM-SMFM-0708	7	12.7	13	26	14	130	1/2"
HM-SMFM-0808	8	12.7	13	26	14	140	1/2"
HM-SMFM-0810	8	16	16	32	17	150	5/8"
HM-SMFM-1010	10	16	16	32	17	175	5/8"
HM-SMFM-1212	12	19	19	38	22	210	3/4"
HM-SMFM-1414	14	22	22	45	25	245	7/8"
HM-SMFM-1616	16	25	25	50	30	275	1"
HM-SMFM-1919	19	28	28.5	58	28	325	1-1/8"
HM-SMFM-2222	22	32	32	65	32	375	1-1/4"
HM-SMFM-2626	26	35	35	70	40	430	1-3/8"

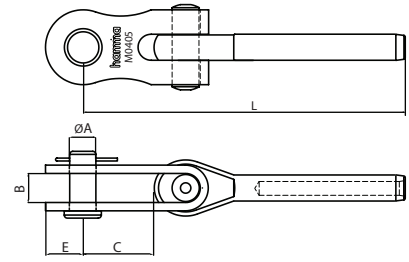


HM-SWTM

Terminale a forcella snodata

Dati tecnici

Materiale : AISI316 - DIN 1.4401



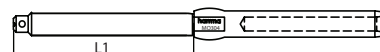
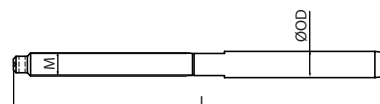
HM-SWTM codice	dimensione (mm)	ØA (mm)	B (mm)	C (mm)	E (mm)	L (mm)	perno (inch)	MBL (kgs)
HM-SWTM-0405	4	8	9	35	12	105	5/16"	2,400
HM-SWTM-0505	5	9.5	11	40.5	14	123.5	5/16"	3,600
HM-SWTM-0506	5	8	9	35	12	115	3/8"	2,400
HM-SWTM-0606	6	9.5	11	40.5	14	134.5	3/8"	3,600
HM-SWTM-0607	6	11	14	49	16	150	7/16"	5,000
HM-SWTM-0707	7	11	14	49	16	162	7/16"	5,000
HM-SWTM-0608	6	12.7	14	49	18	150	1/2"	6,800
HM-SWTM-0708	7	12.7	14	49	18	162	1/2"	6,800
HM-SWTM-0808	8	12.7	14	49	18	176	1/2"	6,800
HM-SWTM-0810	8	15.8	18	61	21	194	5/8"	10,900
HM-SWTM-1010	10	15.8	18	61	21	220	5/8"	10,900
HM-SWTM-1012	10	19	22	70	24	235	3/4"	15,900
HM-SWTM-1212	12	19	22	70	24	262	3/4"	15,900
HM-SWTM-1214	12	22.2	25	75	29	274	7/8"	21,500
HM-SWTM-1414	14	22.2	25	75	29	297	7/8"	21,500
HM-SWTM-1616	16	25.4	28	92	31.5	344	1"	28,300



HM-SWSM-R

Terminale filettato

Dati tecnici
Materiale : AISI316 - DIN 1.4401



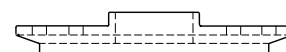
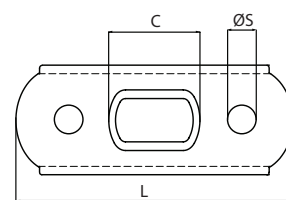
HM-SWSM-R codice	dimensione (mm)	L (mm)	L1 (mm)	M (filetto)	OD (mm)	MBL (kgs)
HM-SWSM-0304R	3	106	59	1/4"-28UNF	6.3	1,550
HM-SWSM-0404R	4	120	59	1/4"-28UNF	7.5	1,550
HM-SWSM-0405R	4	130	69	5/16"-24UNF	7.5	2,400
HM-SWSM-0505R	5	148	69	5/16"-24UNF	9	2,400
HM-SWSM-0506R	5	160	80	3/8"-24UNF	9	3,600
HM-SWSM-0606R	6	170	80	3/8"-24UNF	12.5	3,600
HM-SWSM-0607R	6	190	94	7/16"-20UNF	12.5	5,000
HM-SWSM-0707R	7	200	94	7/16"-20UNF	14.3	5,000
HM-SWSM-0608R	6	190	98	1/2"-20UNF	12.5	6,800
HM-SWSM-0708R	7	202	98	1/2"-20UNF	14.3	6,800
HM-SWSM-0808R	8	216	98	1/2"-20UNF	16.1	6,800
HM-SWSM-0810R	8	234	117	5/8"-48UNF	16.1	10,900
HM-SWSM-1010R	10	260	117	5/8"-18UNF	17.8	10,900
HM-SWSM-1012R	10	278	135	3/4"-16UNF	17.8	15,900
HM-SWSM-1212R	12	305	135	3/4"-16UNF	21.4	15,900
HM-SWSM-1214R	12	320	149	7/8"-14UNF	21.4	21,500
HM-SWSM-1414R	14	345	149	7/8"-14UNF	25	21,500
HM-SWSM-1616R	16	390	168	1"-12UNF	28.1	28,300
HM-SWSM-1918R	19	462	196	1-1/8"-12UNF	34.5	29,900
HM-SWSM-2218R	22	534	224	1-1/4"-12UNF	40.21	34,000

Per ordinare versione sinistra,
sostituire la R con una L

HM-BPTT

Piastra per terminale a martello

Dati tecnici
Materiale : AISI316 - DIN 1.4408
Materiale : AISI316 - DIN 1.4401



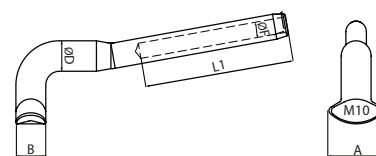
HM-BPTT codice	dimensione (mm)	C (mm)	L (mm)	ØS (mm)
HM-BPTT-0235	2.5-3	12.8	51	5
HM-BPTT-04	4	23	68	6.8
HM-BPTT-05	5	26	88	5.2
HM-BPTT-0607	6-7	34.5	123	6.3
HM-BPTT-0810	8-10	36	140	6.6

HM-SWTT

Terminale a martelletto

Dati tecnici

Materiale : AISI316, EN 1.4401



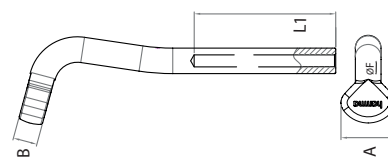
HM-SWTT codice	dimensione (funne)	A (mm)	B (mm)	ØD (mm)	ØF (mm)	L1 (mm)	piastra di supporto (codice)
HM-SWTT-02	2	15	6.35	5.5	2.3	33	HM-BPTT-0235
HM-SWTT-025	2.5	15	6.35	5.5	2.8	33	HM-BPTT-0235
HM-SWTT-03	3	15	6.35	6.3	3.5	33	HM-BPTT-0235
HM-SWTT-035	3.5	15	6.35	6.3	3.8	38	HM-BPTT-0235
HM-SWTT-04	4	20	9.12	7.5	4.5	44	HM-BPTT-04
HM-SWTT-05	5	20	11	9.1	5.5	55	HM-BPTT-05
HM-SWTT-06	6	28	14.3	12.5	6.5	66	HM-BPTT-0607
HM-SWTT-07	7	28	14.3	14.3	7.5	77	HM-BPTT-0607
HM-SWTT-08	8	33	18	16.1	8.5	88	HM-BPTT-0810
HM-SWTT-10	10	33	18	17.8	10.6	110	HM-BPTT-0810

HM-SWTX

Terminale a martelletto - XS

Dati tecnici

Materiale : AISI316, EN 1.4401



HM-SWTX codice	dimensione (funne)	A (mm)	B (mm)	ØD (mm)	ØF (mm)	L1 (mm)	piastra di supporto (codice)
HM-SWTX-02	2.0	13.5	6	6.3	2.3	35	HM-BPTT-0235
HM-SWTX-025	2.5	13.5	6	6.3	2.8	35	HM-BPTT-0235
HM-SWTX-03	3.0	13.5	6	6.3	3.5	35	HM-BPTT-0235
HM-SWTX-035	3.5	13.5	6	6.3	3.8	35	HM-BPTT-0235

HM-6322T

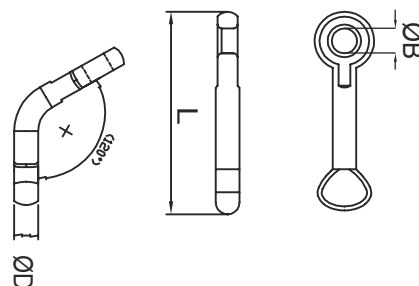
Martelletto ad occhio

Dati tecnici

Materiale : AISI316 - DIN 1.4401

Note

Compatibile con piastra di supporto 6510-7128



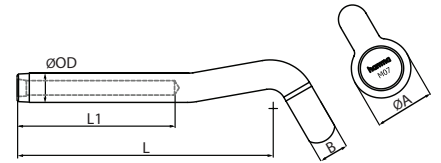
HM-6322T codice	dimensione (mm)	ØB (mm)	ØD (mm)	L (mm)
HM-6322-6467	6	6.4	6	46.7



HM-SWST

Terminale a martelletto a testa tonda

Dati tecnici
Materiale : AISI316 - DIN 1.4401



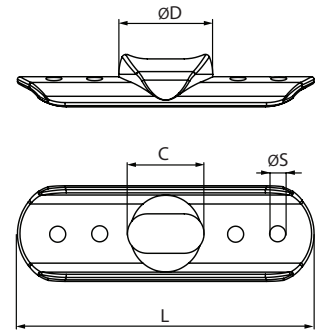
HM-SWST codice	dimensione (mm)	ØA (mm)	B (mm)	L (mm)	L1 (mm)	ØOD (mm)	piastra di supporto (codice)
HM-SWST-04	4	18	9	84	44	7.5	HM-BPST-0405
HM-SWST-05	5	18	9	93	55	9	HM-BPST-0405
HM-SWST-06	6	23	12.5	112	66	12.5	HM-BPST-06
HM-SWST-07	7	29	14.5	123	77	14.2	HM-BPST-07
HM-SWST-08	8	30.5	16.5	152	88	16.1	HM-BPST-08
HM-SWST-10	10	33	18	178	110	17.8	HM-BPST-10
HM-SWST-12	12	39	21	220	132	21.4	HM-BPST-1112



HM-BPST

Piastra di supporto del terminale a testa tonda

Dati tecnici
Materiale : AISI316 - DIN 1.4408



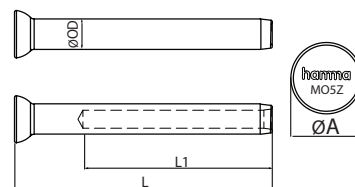
HM-BPST codice	dimensione (mm)	C (mm)	L (mm)	ØS (mm)
HM-BPST-0405	4-5	19	88	5.2
HM-BPST-06	6	24	95	6.5
HM-BPST-07	7	31	120	6.5
HM-BPST-08	8	32	120	6.5
HM-BPST-10	10	34	150	6.5
HM-BPST-1112	12	50	176	6.5

HM-SWSB

Stemball a pressare

Dati tecnici

Materiale : AISI316 - DIN 1.4401



HM-SWSB codice	dimensione (per fune)	ØA (mm)	L (mm)	L1 (mm)	OD (mm)
HM-SWSB-03	3	13.4	50	33	6.3
HM-SWSB-04	4	16.3	66	44	7.5
HM-SWSB-05Z	5	14.4	80	55	9.1
HM-SWSB-05	5	18.8	80	55	9.1
HM-SWSB-06	6	21	94	66	12.5
HM-SWSB-07	7	21.5	103	77	14.3
HM-SWSB-07Z	7	26	103	77	14.2
HM-SWSB-08	8	27	122	88	16.1
HM-SWSB-10	10	27.7	150	110	17.8
HM-SWSB-12	12	33.3	183	132	21.4
HM-SWSB-14	14	32.5	216	154	25
HM-SWSB-16	16	39.4	244	176	28.1

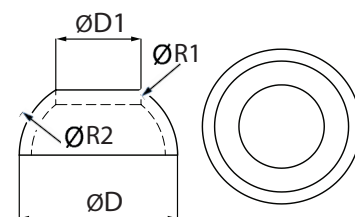


HM-CUP

Coppella

Dati tecnici

Materiale : AISI316 - DIN 1.4408



HM-CUP codice	ØD1 (mm)	ØD (mm)	ØR1 (mm)	ØR2 (mm)
HM-CUP-0818	8.0	18	9	7
HM-CUP-0926	9.0	26	13	11
HM-CUP-11226	11.2	26	13	11
HM-CUP-12526	12.5	26	13	11
HM-CUP-1426	14.0	26	13	11
HM-CUP-1626	16.0	26	13	11
HM-CUP-2034	20.0	34	17	14



Stemball a pressare

accoppiato con



Coppella

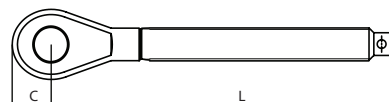
MATCH TABLE

dimensione fune (mm)	HM-SWSB codice	HM-CUP codice
3	HM-SWSB-03	HM-CUP-0818
4 (5/32")	HM-SWSB-04	HM-CUP-0926
5	HM-SWSB-05	HM-CUP-11226
6	HM-SWSB-07	HM-CUP-1426
7	HM-SWSB-07	HM-CUP-1626
8 (5/16")	HM-SWSB-08	HM-CUP-2034
10	HM-SWSB-10	



HM-THE-R / HM-THE-L Terminale filettato ad occhio

Dati tecnici
 Materiale : AISI316 - DIN 1.4401
 R = Filettatura a destra (RHT)
 L = Filettatura a sinistra (LHT)

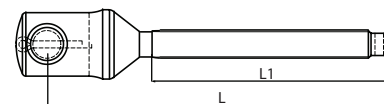
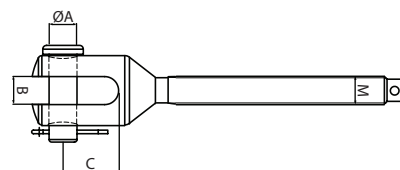


HM-THE-R codice	HM-THE-L codice	dimensione M (filetto)	ØA (mm)	B (mm)	C (mm)	L (mm)	L1 (mm)
HM-THE-05R	HM-THE-05L	5/16"-24UNF	8.5	7.2	10	90	69
HM-THE-06R	HM-THE-06L	3/8"-24UNF	9.8	9	11	105	80
HM-THE-07R	HM-THE-07L	7/16"-20UNF	11.5	10.2	15	129	94
HM-THE-08R	HM-THE-08L	1/2"-20UNF	13.2	12	15	132	98
HM-THE-10R	HM-THE-10L	5/8"-18UNF	16.5	15	18	162	117
HM-THE-12R	HM-THE-12L	3/4"-16UNF	20	18	25	189	135
HM-THE-14R	HM-THE-14L	7/8"-14UNF	23	21	25	214	149
HM-THE-16R	HM-THE-16L	1"-12UNF	26.5	24	34	240	168
HM-THE-18R	HM-THE-18L	1.1/8"-12UNF	30	24	34	268	196
HM-THE-20R	HM-THE-20L	1.1/4"-12UNF	34	30	33	295	224



HM-THF-R / HM-THF-L Terminale filettato a forcella

Dati tecnici
 Materiale : AISI316 - DIN 1.4401 (cono)
 R = Filettatura a destra (RHT)
 L = Filettatura a sinistra (LHT)



HM-THF-R codice	HM-THF-L codice	dimensione (per fune)	ØA (mm)	B (mm)	C (mm)	L (mm)	B.L. (kgs)
HM-THF-05R	HM-THF-05L	5/16"-24UNF	8	7.9	17	100	2,400
HM-THF-06R	HM-THF-06L	3/8"-24UNF	9.5	10	20	115	3,600
HM-THF-07R	HM-THF-07L	7/16"-20UNF	11	11	22	135	5,000
HM-THF-08R	HM-THF-08L	1/2"-20UNF	12.7	13	26	145	6,800
HM-THF-10R	HM-THF-10L	5/8"-18UNF	16	16	32	175	10,900
HM-THF-12R	HM-THF-12L	3/4"-16UNF	19	19	38	205	15,900
HM-THF-14R	HM-THF-14L	7/8"-14UNF	22	22	45	230	21,500

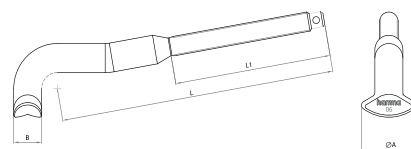


HM-THTT

Terminale a martelletto filettato

Dati tecnici

Materiale: AISI316, EN 1.4401



HM-THTT codice	dimensione M (filetto)	ØA (mm)	B (mm)	L (mm)	L1 (mm)	piastra di supporto (codice)
HM-THTT-05	5/16"-24UNF	20	9	110	69	HM-BPTT-04
HM-THTT-05L	5/16"-20UNF	20	11	120	69	HM-BPTT-05
HM-THTT-06	3/8"-24UNF	20	11	130	80	HM-BPTT-05
HM-THTT-06L	3/8"-24UNF	28	14	140	80	HM-BPTT-0607
HM-THTT-07	7/16"-20UNF	28	14	155	94	HM-BPTT-0607
HM-THTT-08	1/2"-20UNF	30.5	16.5	191	117	HM-BPTT-0607
HM-THTT-08L	1/2"-20UNF	28	14	150	80	HM-BPTT-0810
HM-THTT-10	5/8"-18UNF	33	18	160	80	HM-BPTT-0810

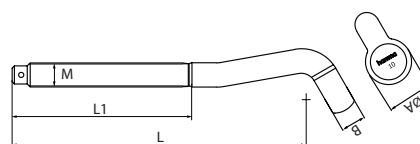


HM-THST

Terminale a martelletto a testa tonda filettato

Dati tecnici

Materiale: AISI316 - DIN 1.4401



HM-THST codice	dimensione M (filetto)	ØA (mm)	B (mm)	L (mm)	L1 (mm)	piastra di supporto (codice)
HM-THST-05	5/16"-24UNF	23	12.5	134	69	HM-BPST-06
HM-THST-06	3/8"-24UNF	23	12.5	145	80	HM-BPST-06
HM-THST-07	7/16"-20UNF	29	13.1	164	94	HM-BPST-07
HM-THST-08	1/2"-20UNF	29	14.5	157	98	HM-BPST-07
HM-THST-08L	1/2"-20UNF	30.5	16.5	174	98	HM-BPST-08
HM-THST-10	5/8"-18UNF	30.5	16.5	191	117	HM-BPST-08
HM-THST-10L	5/8"-18UNF	33	18	200	117	HM-BPST-10
HM-THST-12	3/4"-16UNF	33	18	219	135	HM-BPST-10
HM-THST-12L	3/4"-16UNF	39	21	249	135	HM-BPST-1112
HM-THST-14	7/8"-14UNF	39	21	249	149	HM-BPST-1112

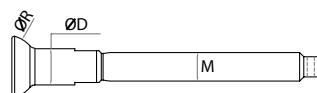
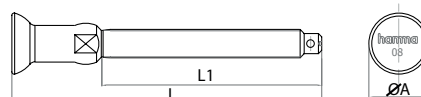


HM-THSB

Stemball filettato sinistro

Dati tecnici

Materiale : AISI316 - DIN 1.4401



HM-THSB codice	dimensione M (filetto)	ØA (mm)	ØOD (mm)	L (mm)	L1 (mm)	ØR (mm)
HM-THSB-05	5/16"-24UNF	18.8	9	103	69	10
HM-THSB-06	3/8"-24UNF	18.8	9	114	80	10
HM-THSB-07	7/16"-20UNF	21	12.5	129	94	11
HM-THSB-08	1/2"-20UNF	21	12.5	133	98	11
HM-THSB-08L	1/2"-20UNF	27	16.1	138	98	14
HM-THSB-10	5/8"-18UNF	27.7	17.8	172	117	14
HM-THSB-12	3/4"-16UNF	33.3	21.4	212	135	17
HM-THSB-14	7/8"-14UNF	33.3	21.4	222	149	17



HM-THT-R / HMT-THT-L

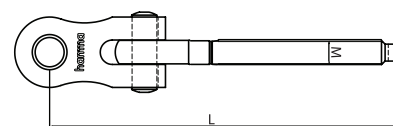
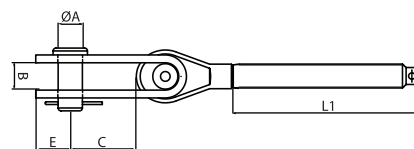
Terminale a forcella snodata filettata

Dati tecnici

Materiale : AISI316 - DIN 1.4401 (cono)

R = Filettatura a destra (RHT)

L = Filettatura a sinistra (LHT)



HM-THT-R codice	HM-THT-L codice	dimensione M (filetto)	ØA (mm)	B (mm)	C (mm)	E (mm)	L (mm)	L1 (mm)	MBL (kgs)
HM-THT-04R	HM-THT-04L	1/4"-28UNF	6.35	7	29	10	108	59	1,550
HM-THT-05R	HM-THT-05L	5/16"-24UNF	8	9	35	12	125	69	2,400
HM-THT-06R	HM-THT-06L	3/8"-24UNF	9.5	11	40.5	14	145.5	80	3,600
HM-THT-07R	HM-THT-07L	7/16"-20UNF	11	14	49	18	178	94	5,000
HM-THT-08R	HM-THT-08L	1/2"-20UNF	12.7	14	49	18	181	98	6,800
HM-THT-10R	HM-THT-10L	5/8"-18UNF	15.8	18	61	21	223	117	10,900
HM-THT-12R	HM-THT-12L	3/4"-16UNF	19	22	70	24	259	135	15,900
HM-THT-14R	HM-THT-14L	7/8"-14UNF	22.2	25	75	29	289	149	21,500
HM-THT-16R	HM-THT-16L	1"-12UNF	25.4	28	92	31.5	332	168	28,300
HM-THT-18R	HM-THT-18L	1.1/8"-12UNF	28.5	32	92	35	360	196	29,900
HM-THT-20R	HM-THT-20L	1.1/4"-12UNF	31.75	38	77	42.5	405	224	34,000



HM-NUT

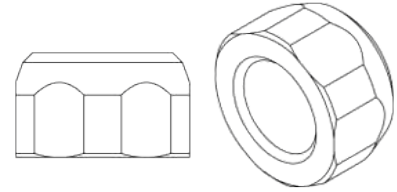
Dado filettato

Dati tecnici

Materiale : AISI316 - DIN 1.4408

R = Filettatura a destra (RHT)

L = Filettatura a sinistra (LHT)



HM-NUT-R codice	HM-NUT-L codice	filetto
HM-NUT-04R	HM-NUT-04L	1/4"-28UNF
HM-NUT-05R	HM-NUT-05L	5/16"-24UNF
HM-NUT-06R	HM-NUT-06L	3/8"-24UNF
HM-NUT-07R	HM-NUT-07L	7/16"-20UNF
HM-NUT-08R	HM-NUT-08L	1/2"-20UNF
HM-NUT-10R	HM-NUT-10L	5/8"-18UNF
HM-NUT-12R	HM-NUT-12L	3/4"-16UNF
HM-NUT-14R	HM-NUT-14L	7/8"-14UNF
HM-NUT-16R	HM-NUT-16L	1"-12UNF
HM-NUT-18R	HM-NUT-18L	1.1/8"-12UNF
HM-NUT-20R	HM-NUT-20L	1.1/4"-12UNF

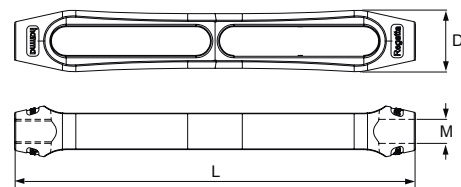


HM-BODY

Canala aperta

Dati tecnici

Materiale : Bronzo forgiato



HM-BODY codice	dimensione M (filetto)	ØD (mm)	L1 (mm)	MBL (kgs)
HM-BODY-04	1/4"-28UNF	18.0	114	1,550
HM-BODY-05	5/16"-24UNF	20.4	132	2,400
HM-BODY-06	3/8"-24UNF	24.6	155	3,750
HM-BODY-07	7/16"-20UNF	28.8	180	5,000
HM-BODY-08	1/2"-20UNF	31.3	190	6,800
HM-BODY-09	5/8"-18UNF	39.4	223	10,900
HM-BODY-12	3/4"-16UNF	46.5	258	15,900
HM-BODY-14	7/8"-14UNF	52.6	290	21,700
HM-BODY-16	1"-12UNF	55.9	322	28,300
HM-BODY-18	1.1/8"-12UNF	68.7	385	29,900
HM-BODY-20	1.1/4"-12UNF	76.9	440	34,000

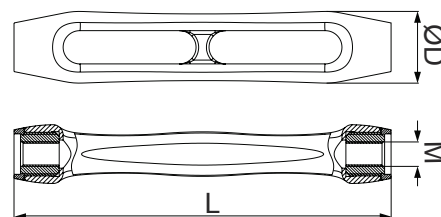


HM-OSB

Canala aperta - Corpo in acciaio inox con inserto in bronzo

Dati tecnici

Materiale : AISI316, EN 1.4401



HM-OSB codice	dimensione M (filetto)	ØD (mm)	L1 (mm)	MBL (kgs)
HM-OSB-05	1/4"- 28UNF	18	105	N/A
HM-OSB-05	5/16"- 24UNF	21	125	N/A
HM-OSB-06	3/8"- 24UNF	26	146	N/A
HM-OSB-07	7/16"- 20UNF	33	180	N/A
HM-OSB-08	1/2"- 20UNF	33	180	6,800
HM-OSB-10	5/8"-18UNF	38	210	10,900
HM-OSB-12	3/4"-16UNF	44	243	15,900
HM-OSB-14	7/8"-14UNF	51	270	21,700
HM-OSB-16	1"-12UNF	55	306	28,300

Solo su richiesta

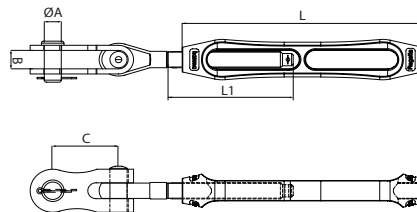


HM-BT

Tenditore con forcella snodata

Dati tecnici

Materiale : Bronzo forgiato / AISI316-DIN 1.4401



HM-BT codice	dimensione (filetto)	ØA (mm)	B (mm)	C (mm)	L (mm)	L1 (mm)	MBL (kgs)
HM-BT-04	1/4"-28UNF	6.35	7	29	108	59	1,550
HM-BT-05	5/16"-24UNF	8	9	35	125	69	2,400
HM-BT-06	3/8"-24UNF	9.5	11	40.5	145.5	80	3,600
HM-BT-07	7/16"-20UNF	11	14	49	178	94	5,000
HM-BT-08	1/2"-20UNF	12.7	14	49	181	98	6,800
HM-BT-10	5/8"-18UNF	15.8	18	61	223	117	10,900
HM-BT-12	3/4"-16UNF	19	22	70	259	135	15,900
HM-BT-14	7/8"-14UNF	22.2	25	75	289	149	21,500
HM-BT-16	1"-12UNF	25.4	28	92	332	168	28,300
HM-BT-18	1.1/8UNF	28.5	32	92	385	196	29,900
HM-BT-20	1.1/4UNF	31.75	38	110	440	224	34,000

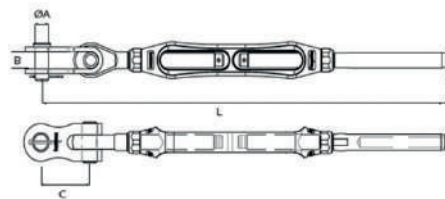


HM-TTSM

Tenditore a vite con perno di bloccaggio con forcella snodata

Dati tecnici

Materiale : Bronzo forgiato / AISI316-DIN 1.4401



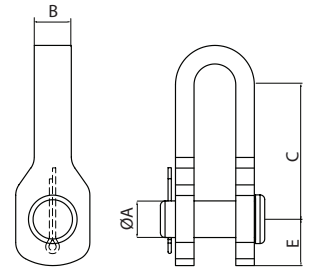
HM-TTSM codice	dimensione (filetto)	ØA (mm)	B (mm)	C (mm)	L MIN (mm)	L MAX (mm)	MBL (kgs)
HM-TTSM-0304	1/4"	3	8	18	217	290	1,550
HM-TTSM-0404	1/4"	4	8	18	232	305	1,550
HM-TTSM-0405	5/16"	4	9	20.3	260	350	2,200
HM-TTSM-0505	5/16"	5	9	20.3	280	370	2,400
HM-TTSM-0506	3/8"	5	11	24.3	310	415	3,200
HM-TTSM-0606	3/8"	6	11	24.5	320	425	3,600
HM-TTSM-0607	7/16"	6	14	24.5	375	495	5,000
HM-TTSM-0608	1/2"	6	14	26.8	390	505	6,800
HM-TTSM-0708	1/2"	7	14	26.8	390	515	6,800
HM-TTSM-0808	1/2"	8	14	26.8	405	530	6,800
HM-TTSM-0810	5/8"	8	18	36.5	470	610	10,900
HM-TTSM-1010	5/8"	10	18	36.5	490	640	10,900
HM-TTSM-1012	3/4"	10	22	36.4	550	710	15,900
HM-TTSM-1212	3/4"	12	22	35.8	575	740	15,900
HM-TTSM-1414	7/8"	14	25	38.1	645	830	21,500
HM-TTSM-1616	1"	16	28	40.7	723	920	28,300



HM-EJT

Snodo occhio-forcella

Dati tecnici
Materiale : AISI316 - DIN 1.4401



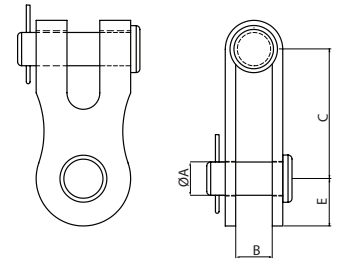
HM-EJT codice	dimensione perno (inch)	ØA (mm)	B (mm)	C (mm)	E (mm)	MBL (kfg)
HM-EJT-07	7/16"	11	13	51	15	5,000
HM-EJT-08	1/2"	12.7	15	53	19	6,800
HM-EJT-10	5/8"	15.8	16	58	20	10,900
HM-EJT-12	3/4"	19	19	76.5	25	15,900
HM-EJT-14	7/8"	22.2	22	85	30	21,500
HM-EJT-16	1"	25.4	25	96.5	30	28,300



HM-DJTP

Snodo forcella-forcella

Dati tecnici
Materiale : AISI316 - DIN 1.4401



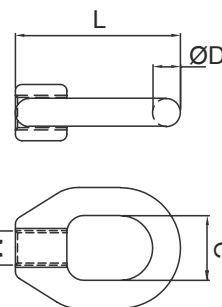
HM-DJTP codice	dimensione perno (inch)	ØA (mm)	B (mm)	C (mm)	E (mm)	MBL (kfg)
HM-DJTP-05	5/16"	8	9	35	12	2,400
HM-DJTP-06	3/8"	9.5	11	40.5	14	3,600
HM-DJTP-07	7/16"	11	14	49	16	5,000
HM-DJTP-08	1/2"	12.7	14	49	18	6,800
HM-DJTP-10	5/8"	15.8	18	61	21	10,900
HM-DJTP-12	3/4"	19	22	70	24	15,900
HM-DJTP-14	7/8"	22.2	25	75	29	21,500
HM-DJTP-16	1"	25.4	26	92	31.5	28,300
HM-DJTP-18	1.1/8"	28.5	26	92	35	29,900
HM-DJTP-20	1.1/4"	31.75	38	110	42.5	34,000



HM-6306

Golfare

Dati tecnici
Materiale: AISI316 - DIN 1.4408



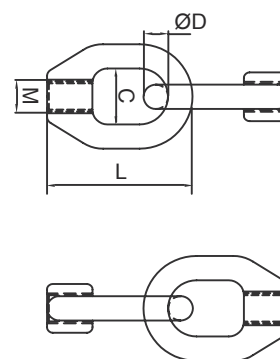
HM-6306 codice	dimensione (mm/inch)	C (mm)	ØD (mm)	L (mm)	M (filetto)
HM-6306-2108	8	15	6.5	37.5	M8
HM-6306-2536	5/16"UNF	15	6.5	37.5	5/16"UNF



HM-6306

Golfare doppio incrociato

Dati tecnici
Materiale: AISI316 - DIN 1.4408



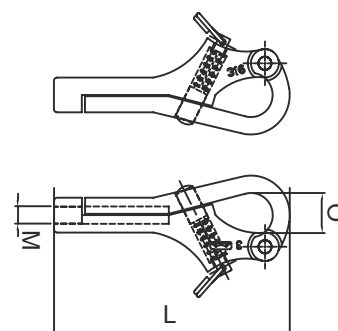
HM-6306 codice	dimensione (mm/inch)	C (mm)	ØD (mm)	L (mm)	M (filetto)
HM-6306-2208	8	15	6.5	37.5	M8
HM-6306-2526	5/16"UNF	15	6.5	37.5	5/16"UNF



HM-6283

Gancio pellicano

Dati tecnici
Materiale: AISI316 - DIN 1.4408
Materiale: AISI316 - DIN 1.4401



HM-6283 codice	dimensione (mm)	L (mm)	M (mm)	O (mm)	B.L. (kgs)
HM-6283-1008	M8	100	M8	16	1,500



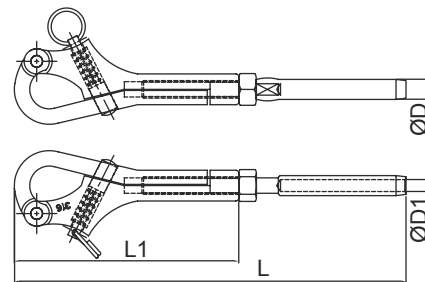
HM-6283

Gancio pellicano con perno a pressare

Dati tecnici

Materiale : AISI316 - DIN 1.4408

Materiale : AISI316 - DIN 1.4401



HM-6283 codice	dimensione (fune/filetto)	ØD (mm)	ØD1 (mm)	L (mm)	L1 (mm)	B.L. (kgs)
HM-6283-1414	4mm*M8	7.54	4.3	168	100	1,500
HM-6283-1514	5mm*M8	9.08	5.3	176	100	1,500

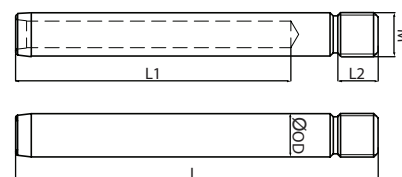


HM-2780

Asta a pressare - filettatura corta

Dati tecnici

Materiale : AISI316 - DIN 1.4401



HM-2780 codice	dimensione (fune/filetto)	L (mm)	L1 (mm)	L2 (mm)	M (filetto)	ØOD (mm)
HM-2780-1645	4mm*M8	70	44	12	M8	7.5
HM-2780-1644	5mm*M8	82	55	12	M8	9.1

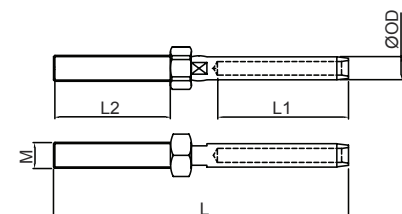


HM-6780

Terminale a pressare - filettatura destra

Dati tecnici

Materiale : AISI316 - DIN 1.4401



HM-6780 codice	dimensione (fune/filetto)	L (mm)	L1 (mm)	L2 (mm)	OD (mm)
HM-6780-1021	4mm*M8	115	45	54	7.5
HM-6780-1095	5mm*M8	128	51	57	9.1

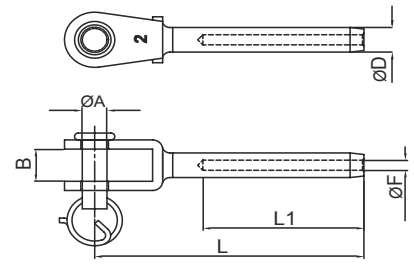


HM-6780

Terminale a pressare con forcella saldata

Dati tecnici

Materiale: AISI316 - DIN 1.4401



HM-6780 codice	dimensione (fune)	ØA (mm)	B (mm)	ØD (mm)	ØF (mm)	L (mm)	L1 (mm)	accessorio	B.L. (kgs)
HM-6780-3004	4mm	8	11	7.54	4.3	77	45	anello	1,800
HM-6780-3005	5mm	9	12	9.12	5.3	87	51	anello	2,650

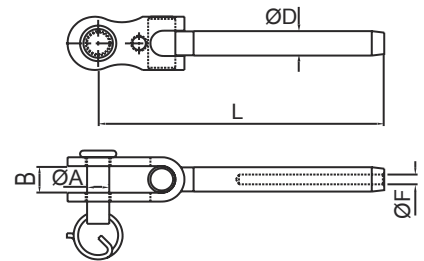


HM-6780

Terminale con forcella snodata

Dati tecnici

Materiale: AISI316 - DIN 1.4401



HM-6780 codice	dimensione (fune)	ØA (mm)	B (mm)	ØD (mm)	ØF (mm)	L (mm)	accessorio	B.L. (kgs)
HM-6780-5004	4mm	8	10	7.54	4.30	81	anello	1,400
HM-6780-5005	5mm	9	12	9.12	5.30	94	anello	1,700

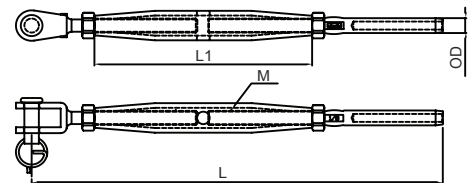


HM-6312

Tenditore canaula chiusa - forcella - terminale a pressare

Dati tecnici

Materiale: AISI316 - DIN 1.4401



HM-6312 codice	dimensione (fune/filetto)	L (mm)	L1 (mm)	M (filetto)	OD (mm)	accessorio	B.L. (kgs)
HM-6312-1018	4*M8	205	105	M8	7.50	anello	1,400
HM-6312-1064	5*M8	210	105	M8	9.10	anello	1,400

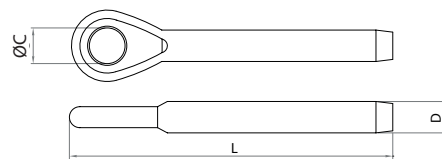




HM-SWNE / HM-6780 / HM-SMEM

Terminale a pressare
ad occhio

Dati tecnici
Materiale : AISI316 - DIN 1.4408



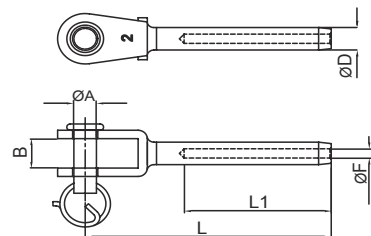
HM-SWNE / HM-6780 / HM-SMEM codice	dimensione (mm)	ØC (mm)	ØD (mm)	L (mm)	B.L. (kgs)
HM-SWNE-02	2	5.5	5.53	56	850
HM-SWNE-025	2.5	5.5	5.53	56	850
HM-SWNE-03	3	6.5	6.35	62	1,000
HM-SWNE-04	4	8.5	7.54	77	1,350
HM-SWNE-05	5	10.5	9.12	87	2,500
HM-6780-2206	6	13	12.54	107.5	4,500
HM-6780-2208	8	14.5	16.13	133	6,700
HM-6780-2210	10	16.3	17.85	159.5	7,800
HM-6780-2212	12	19.3	21.44	180	9,000
HM-SMEM-1414	14	23	21	220	-
HM-SMEM-1616	16	26.5	23	250	-



HM-6780

Terminale a pressare con
forcella saldata

Dati tecnici
Materiale : AISI316 - DIN 1.4401



HM-6780 codice	dimensione (funi)	ØA (mm)	B (mm)	ØD (mm)	ØF (mm)	L (mm)	L1 (mm)	accessorio	B.L. (kgs)
HM-6780-3002	2	5	7	5.53	2.2	53.5	32	anello	700
HM-6780-3025	2.5	5	7	5.53	2.7	62	35	anello	700
HM-6780-3003	3	6	8	6.35	3.3	68	38	anello	1,250
HM-6780-3904	4	6	-	-	-	-	-	anello	-
HM-6780-3004	4	8	11	7.54	4.3	77	45	anello	1,800
HM-6780-3005	5	9	12	9.12	5.3	87	51	anello	2,650
HM-6780-3006	6	12	14.5	12.54	6.35	109	64	anello	4,000
HM-6780-3007	7	12	14.5	14.3	7.3	116	70	anello	5,800
HM-6780-3008	8	14.28	15	16.13	8.4	148	80	perno sicurezza	6,500
HM-6780-3010	10	16	17	17.85	10.5	154	90	perno sicurezza	9,000
HM-6780-3012	12	19	20	21.44	12.5	176	105	perno sicurezza	11,000
HM-6780-3114	14	25	30	25	14.9	257	140	perno sicurezza	13,000
HM-6780-3116	16	25	30	28.17	17.1	281	160	perno sicurezza	18,000



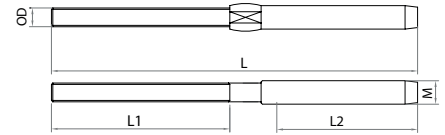
HM-6780-R / HM-6780-L

Terminale a pressare - filettatura destra

Dati tecnici

Materiale : AISI316 - DIN 1.4401

R = Filettatura a destra (RHT)
L = Filettatura a sinistra (LHT)



HM-6780-R codice	HM-6780-L codice	dimensione (mm)	L (mm)	L1 (mm)	L2 (mm)	M (filetto)	OD (mm)
HM-6780-1012	HM-6780-1032	2.5	86	35	40	M5	5.5
HM-6780-1068	-	3	80	32	40	M5	6.3
HM-6780-1020	HM-6780-1033	3	97	38	48	M6	6.3
HM-6780-1050	-	4	110	45	48	M6	7.5
HM-6780-1021	HM-6780-1034	4	115	45	54	M8	7.5
HM-6780-1095	-	5	128	51	57	M8	9.1
HM-6780-1026	HM-6780-1035	5	128	52	61	M10	9.1
HM-6780-1028	HM-6780-1036	6	162	63	79	M12	12.5
HM-6780-1134	-	6	162	64	80	M10	17.8
HM-6780-1170	-	7	168	70	80	M12	14.3
HM-6780-1029	HM-6780-1189	7	178	70	90	M14	14.3
HM-6780-1056	HM-6780-1812	8	175	80	76	M12	16.1
HM-6780-1171	-	8	190	80	90	M14	16.1
HM-6780-1030	HM-6780-1037	8	214	80	102	M16	16.1
HM-6780-1018	-	10	225	100	105	M16	17.8
HM-6780-1014	HM-6780-1813	10	225	100	105	M20	17.8
HM-6780-1566	-	12	278	144	116	M20	21.4
-	HM-6780-1814	12	284	144	120	M20	21.4



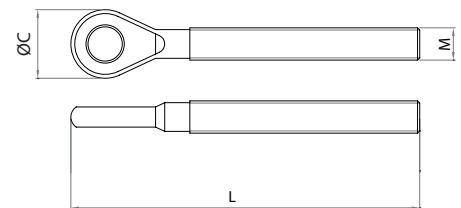
HM-6780-R / HM-6780-L

Terminale filettato ad occhio

Dati tecnici

Materiale : AISI316 - DIN 1.4401

R = Filettatura a destra (RHT)
L = Filettatura a sinistra (LHT)



HM-6780-R codice	HM-6780-L codice	dimensione (mm/inch)	ØC (mm)	L (mm)	M (filetto)	B.L. (kgs)
HM-6780-2156	HM-6780-2256	M5	5.5	68	M5	750
HM-6780-2166	HM-6780-2266	M6	6.5	68	M6	1,000
HM-6780-2188	HM-6780-2288	M8	8.5	86.5	M8	2,200
HM-6780-2110	HM-6780-2201	M10	10.8	102	M10	3,000
HM-6780-2112	HM-6780-2221	M12	13	122.5	M12	5,000
HM-6780-2114	HM-6780-2214	M14	13	138	M14	6,100
HM-6780-2116	HM-6780-2216	M16	14.5	148.5	M16	8,000
HM-6780-2120	HM-6780-2220	M20	19.5	185	M20	11,000



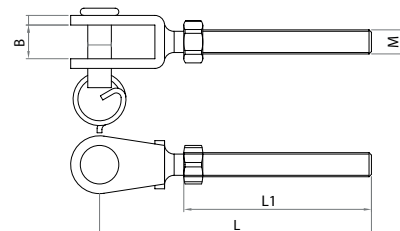
HM-6931-R / HM-6312-L

Terminale a forcella filettata

Dati tecnici

Materiale : AISI316 - DIN 1.4401

R = Filettatura a destra (RHT)
L = Filettatura a sinistra (LHT)



HM-6931-R codice	HM-6312-L codice	dimensione (mm)	B (mm)	L (mm)	L1 (mm)	M (filetto)	accessori	B.L. (kgs)
HM-6931-2336	HM-6312-3318	5	7	56.5	39	M5	anello	250
HM-6931-2306	HM-6312-2206	6	8	68.5	50	M6	anello	1,400
HM-6931-2208	HM-6312-2256	8	11	80	57	M8	anello	2,200
HM-6931-2210	HM-6312-3319	10	12	98.5	68	M10	anello	3,450
HM-6312-6012	HM-6312-0612	12	14.5	121.25	82	M12	anello	5,000
HM-6931-2214	HM-6312-2614	14	15	136	95	M14	perno sicurezza	6,400
HM-6312-0619	HM-6312-0617	16	17	143	102	M16	perno sicurezza	8,000
HM-6312-0620	HM-6312-0618	19	20	160	113	M20	perno sicurezza	10,500



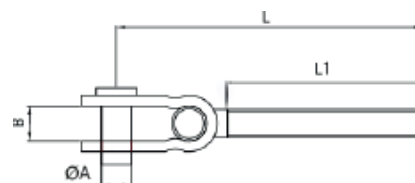
HM-6312 / HM-6931

Terminale a forcella filettata con snodo

Dati tecnici

Materiale : AISI316 - DIN 1.4401

R = Filettatura a destra (RHT)
L = Filettatura a sinistra (LHT)



HM-6312-L HM-6931-L codice	HM-6312-R HM-6931-R codice	dimensione	ØA (mm)	B (mm)	L (mm)	L1 (mm)	accessori	B.L. (kgs)
HM-6312-5505	HM-6312-5055	M5	5	6	63	42	anello	500
HM-6931-2506	HM-6312-5066	M6	6	7	72	48	anello	900
HM-6931-2508	HM-6931-2580	M8	8	10	88	56	anello	1,650
HM-6931-2510	HM-6931-2501	M10	9	12	106	67	anello	2,500
HM-6931-2512	HM-6931-2521	M12	12	13	125	81	anello	3,700
HM-6931-2514	HM-6931-2541	M14	14.28	15	142	89	perno sicurezza	5,000
HM-6931-2516	HM-6931-2561	M16	16	17	162	103	perno sicurezza	6,950
HM-6931-2520	HM-6931-2502	M20	19	20	186	115	perno sicurezza	10,000

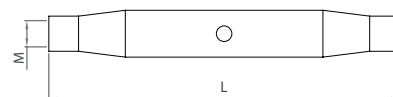


HM-6312

Canaula chiusa

Dati tecnici

Materiale : AISI316 - DIN 1.4408



HM-6312 codice	dimensione (filetto)	L (mm)	M (filetto)	B.L. (kgs)
HM-6312-0905	M5	80	M5	750
HM-6312-0906	M6	90	M6	1,400
HM-6312-0908	M8	105	M8	2,400
HM-6312-0910	M10	125	M10	3,450
HM-6312-0912	M12	150	M12	5,000
HM-6312-0914	M14	165	M14	6,500
HM-6312-0916	M16	190	M16	8,500
HM-6312-0920	M20	210	M20	13,000
HM-2312-0925	M20*3.5	210	M20	12,800
HM-2312-0922	M22*4	270	M22	15,900
HM-6312-0928	M24	250	M24	21,000

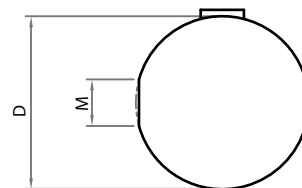


HM-6125 / HM-6126 / HM-6128

Terminale a sfera

Dati tecnici

Materiale : AISI316 - DIN 1.4408



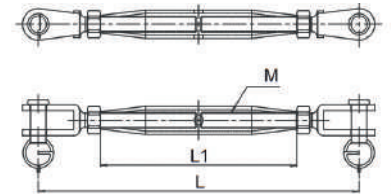
HM-6125 / HM-6126 / HM-6128 codice	ØD (mm)	M (filetto)	B.L. (kgs)
HM-6125-1503	15	M5	750
HM-6125-2003	20	M5	750
HM-6126-2045	20	M6	1,400
HM-6128-2506	25	M8	2,200



HM-6312

Tenditore canala chiusa - forcella-forcella

Dati tecnici
Materiale : AISI316 - DIN 1.4408



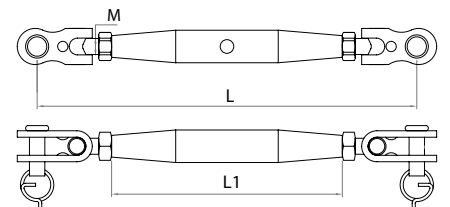
HM-6312 codice	dimensione (mm)	L (mm)	L1 (mm)	M (filetto)	accessori	B.L. (kgs)
HM-6312-0505	5	115	80	M5	anello	750
HM-6312-0506	6	142	90	M6	anello	1,400
HM-6312-0508	8	160	105	M8	anello	2,200
HM-6312-0510	10	200	125	M10	anello	3,450
HM-6312-0512	12	245	150	M12	anello	5,000
HM-6312-0514	14	280	165	M14	perno sicurezza	6,400
HM-6312-0516	16	304	190	M16	perno sicurezza	8,000
HM-6312-9220	20	350	210	M20	perno sicurezza	10,500



HM-6312

Tenditore canala chiusa - forcella-forcella snodata

Dati tecnici
Materiale : AISI316 - DIN 1.4408



HM-6312 codice	dimensione (mm)	L (mm)	L1 (mm)	M (filetto)	accessori	B.L. (kgs)
HM-6312-4005	5	124	80	M5	anello	500
HM-6312-4006	6	150	90	M6	anello	900
HM-6312-4008	8	170	105	M8	anello	1,650
HM-6312-4010	10	205	125	M10	anello	2,500
HM-6312-4012	12	265	150	M12	anello	3,700
HM-6312-4014	14	280	165	M14	perno sicurezza	5,000
HM-6312-1054	16	335	190	M16	perno sicurezza	6,950
HM-6312-4020	20	375	210	M20	perno sicurezza	9,600

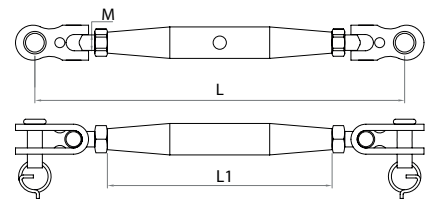


HM-6312

Tenditore canaula chiusa - forcelle snodate

Dati tecnici

Materiale : AISI316 - DIN 1.4408



HM-6312 codice	dimensione (mm)	L (mm)	L1 (mm)	M (filetto)	accessori	B.L. (kgs)
HM-6312-1052	5	131	80	M5	anello	500
HM-6312-5006	6	148	90	M6	anello	900
HM-6312-5008	8	180	105	M8	anello	1,650
HM-6312-5010	10	220	125	M10	anello	2,500
HM-6312-5012	12	258	150	M12	anello	3,700
HM-6312-1061	14	295	165	M14	perno sicurezza	5,000
HM-6312-5016	16	335	190	M16	perno sicurezza	6,950
HM-6312-5020	20	385	210	M20	perno sicurezza	9,600

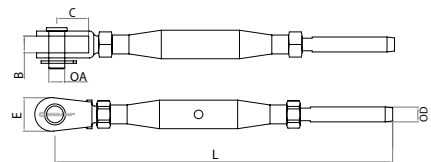


HM-6312

Tenditore canaula chiusa - forcella-terminale a pressare

Dati tecnici

Materiale : AISI316 - DIN 1.4401



HM-6312 codice	dimensione (mm)	L (mm)	L1 (mm)	M (filetto)	accessori	OD (mm)	fune Ø (mm)	B.L. (kgs)
HM-6312-1017	5	150	80	M5	anello	5.5	2.5	600
HM-6312-1016	6	170	90	M6	anello	6.3	3	1000
HM-6312-1018	8	205	105	M8	anello	7.5	4	1400
HM-6312-1009	10	240	125	M10	anello	9.1	5	2200
HM-6312-1010	12	295	150	M12	anello	12.5	6	4000
HM-6312-1011	14	325	165	M14	perno sicurezza	14.3	7	5400
HM-6312-1070	16	370	190	M16	perno sicurezza	16.1	8	6500
HM-6312-1071	20	405	210	M20	perno sicurezza	17.8	10	8500

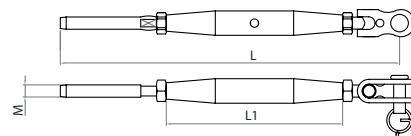


HM-6312

Tenditore canala chiusa - forcella
snodata-terminale a pressare

Dati tecnici

Materiale : AISI316- DIN 1.4408



HM-6312 codice	dimensione (mm)	L (mm)	L1 (mm)	M (filetto)	accessori	OD (mm)	fune Ø (mm)	B.L. (kgs)
HM-6312-5047	2.5	155	80	M5	anello	5.5	2.5	600
HM-6312-1044	3	172	90	M6	anello	6.3	3	1,000
HM-6312-1076	4	171	90	M6	anello	7.5	4	1,000
HM-6312-1045	4	210	105	M8	anello	7.5	4	1,400
HM-6312-1077	5	216	105	M8	anello	9.1	5	1,400
HM-6312-1035	5	246	125	M10	anello	9.1	5	2,200
HM-6312-1036	6	296	150	M12	anello	12.5	6	4,000
HM-6312-1037	7	328	165	M14	perno sicurezza	14.3	7	5,400
HM-6312-1075	8	310	150	M12	anello	16.1	8	4,000
HM-6312-1038	8	386	190	M16	perno sicurezza	16.1	8	6,500
HM-6312-1039	10	422	210	M20	perno sicurezza	17.8	10	8,500
HM-6312-1074	12	416	190	M16	perno sicurezza	17.8	12	6,500

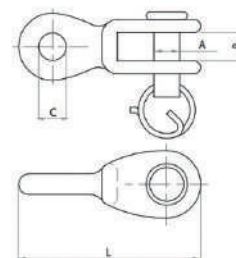


HM-6340

Snodo forcella-occhio

Dati tecnici

Materiale : AISI316- DIN 1.4408



HM-6340 codice	AØ (mm)	B (mm)	CØ (mm)	L (mm)	B.L. (kgs)
HM-6340-0005	5	5.5	5.3	35	1,000
HM-6340-0006	6	6.5	6.8	41	1,250

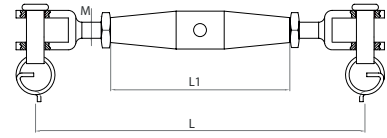


HM-6312

Mini tenditore canaula chiusa forcella-forcella

Dati tecnici

Materiale : AISI316- DIN 1.4401



HM-6312 codice	dimensione (mm)	L (mm)	L1 (mm)	M (filetto)	B.L. (kgs)
HM-6312-0804	4	84	40	M4	500
HM-6312-0805	5	95	50	M5	750
HM-6312-0806	6	110	60	M6	1,400
HM-6312-0808	8	122	60	M8	2,200
HM-6312-0810	10	164	80	M10	3,450

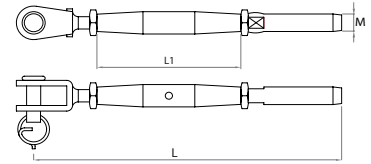


HM-6312

Mini tenditore canaula chiusa forcella-terminale a pressare

Dati tecnici

Materiale : AISI316- DIN 1.4401



HM-6312 codice	dimensione (mm)	L (mm)	L1 (mm)	M (filetto)	fune Ø (mm)	B.L. (kgs)
HM-6312-1020	5	107	50	M5	3	750
HM-6312-1021	6	133	60	M6	4	1,250
HM-6312-1022	8	147	60	M8	5	2,200
HM-6312-1019	10	191	80	M10	6	3,450

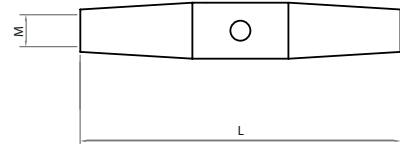


HM-6312

Mini canaula chiusa

Dati tecnici

Materiale : AISI316 - DIN 1.4408



HM-6312 codice	dimensione (mm)	L (mm)	M (filetto)	B.L. (kgs)
HM-6312-3004	4	40	M4	360
HM-6312-3005	5	50	M5	750
HM-6312-3006	6	60	M6	1,250
HM-6312-3008	8	60	M8	2,200
HM-6312-3010	10	80	M10	3,400

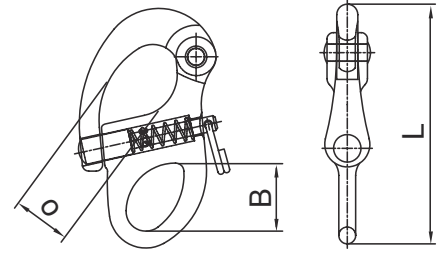


HM-6248

Moschettone rapido con anello

Dati tecnici

Materiale : AISI316 - DIN 1.4408
Materiale : AISI316 - DIN 1.4401



HM-6248 codice	dimensione (mm)	B (mm)	L (mm)	O (mm)	B.L. (kgs)
HM-6248-3000	0	6,5	32	9	400
HM-6248-3001	1	16	56	12	1,100
HM-6248-3322	2	21	70	19	2,000
HM-6248-3333	3	21	102	25	3,500

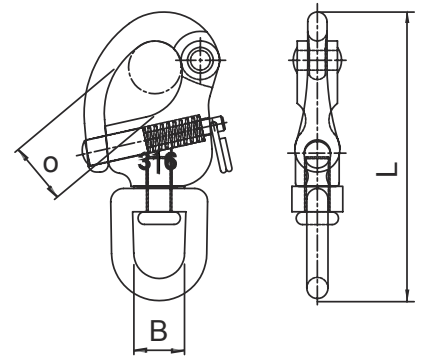


HM-6248

Moschettone rapido con girello

Dati tecnici

Materiale : AISI316 - DIN 1.4408
Materiale : AISI316 - DIN 1.4401



HM-6248 codice	dimensione (funi)	B (mm)	L (mm)	O (mm)	B.L. (kgs)
HM-6248-2001	1	12	67	14	1,100
HM-6248-2021	2	16	87	20	2,000
HM-6248-2304	3	22	126	27	3,500

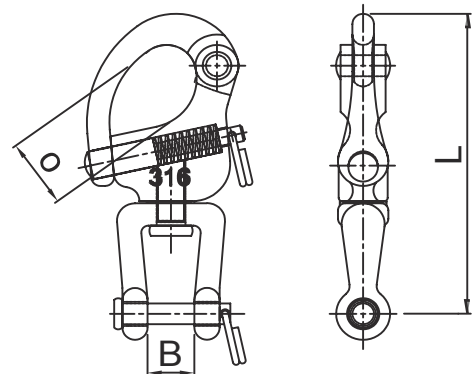


HM-6247

Moschettone rapido con girello a forcella

Dati tecnici

Materiale : AISI316 - DIN 1.4408
Materiale : AISI316 - DIN 1.4401



HM-6247 codice	dimensione (funi)	B (mm)	L (mm)	O (mm)	B.L. (kgs)
HM-6247-8170	1	13	70	14	1,100
HM-6247-8288	2	13	87	20	2,000
HM-6247-8313	3	22	127	27	3,500

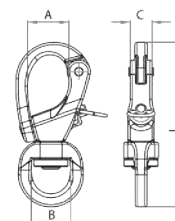


HM-903

Moschettone rapido con girello - apertura laterale

Dati tecnici
Materiale: 17-4PH

S = Small
L = Large



HM-903S / HM-903-L	dimensione (mm)	A (mm)	B (mm)	C (mm)	L (mm)	B.L. (kgs)
codice						
HM-903-01S	1	16.5	14	9	64	2,200
HM-903-02S	2	21	20	11	96.5	4,100
HM-903-03S	3	24.5	25.4	14	124	6,100
HM-903-01L	1	16.5	14	9	64	2,200
HM-903-02L	2	21	25	11	88	4,100
HM-903-03L	3	27	28	14	106.5	6,100

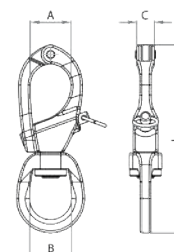


HM-902S / HM-902L

Moschettone rapido con girello - apertura superiore

Dati tecnici
Materiale: 17-4PH

S = Small
L = Large



HM-902S / HM-902-L	dimensione (mm)	A (mm)	B (mm)	C (mm)	L (mm)	B.L. (kgs)
codice						
HM-902-01S	1	17.5	14	8	72	2,200
HM-902-02S	2	23	20	10	99.5	4,100
HM-902-03S	3	28	25.4	12	117	6,100
HM-902-01L	1	17.5	14	8	72	2,200
HM-902-02L	2	23	25	10.5	107.5	4,100
HM-902-03L	3	28	28	13	129	6,100

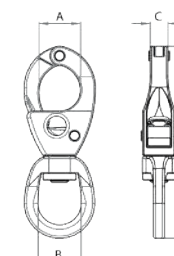


HM-901S / HM-901L

Moschettone con girello

Dati tecnici
Materiale: 17-4PH

S = Small
L = Large



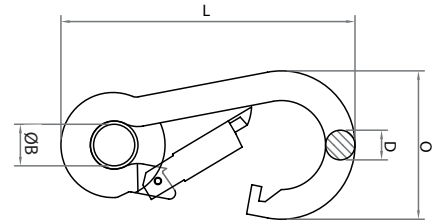
HM-901S / HM-901-L	dimensione (mm)	A (mm)	B (mm)	C (mm)	L (mm)	B.L. (kgs)
codice						
HM-901-01S	1	14	14	8	64.5	2,000
HM-901-02S	2	22	20	11	99.5	3,600
HM-901-03S	3	28	25.4	12	117	5,650
HM-901-01L	1	14	14	8	69	2,000
HM-901-02L	2	22	25	11	107.5	3,600
HM-901-03L	3	28	28	12	129	5,650



HM-6245 / HM-2245

Moschettone con anello

Dati tecnici
Materiale : AISI316 - DIN 1.4408



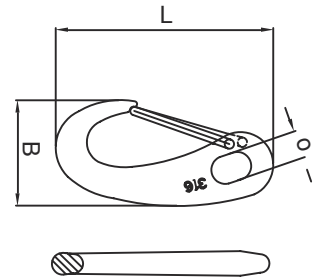
HM-6245 codice	dimensione (mm)	ØB (mm)	ØD (mm)	L (mm)	O (mm)	B.L. (kgs)
HM-6245-0204	4	6.5	4.5	33	11.5	100
HM-2245-0205	5	7	5	40	16	160
HM-2245-0206	6	9	6	48	18	300
HM-6245-0207	7	8	8	56	20.5	400
HM-2245-0208	8	12	8	64	23.5	600
HM-6245-0209	9	11	9	72	26.5	700
HM-2245-0210	10	16	10	80	30	800



HM-6247

Moschettone a gancio

Dati tecnici
Materiale : AISI316 - DIN 1.4408



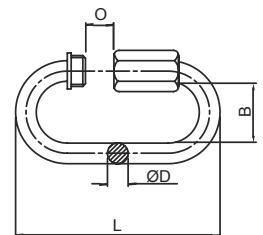
HM-6247 codice	dimensione (mm)	B (mm)	L (mm)	O (mm)	B.L. (kgs)
HM-6247-0032	32	4.0	32	7	80
HM-6247-0050	50	6.6	50	10	220
HM-6247-0070	70	9.0	70	14	500
HM-6247-0100	100	13.8	98	20	900



HM-2735 / HM-6785

Maglia rapida

Dati tecnici
Materiale : AISI316 - DIN 1.4401



HM-2735 / HM-6785 codice	dimensione (mm)	B (mm)	ØD (mm)	L (mm)	O (mm)
HM-2735-0004	4	11	4	39.5	5.5
HM-2735-0005	5	12.5	5	48.5	6.5
HM-2735-0006	6	14	6	57	7.5
HM-2735-0008	8	17	8	74	10
HM-2735-0010	10	20	11	89	12
HM-2735-0012	12	23	12	104.5	15

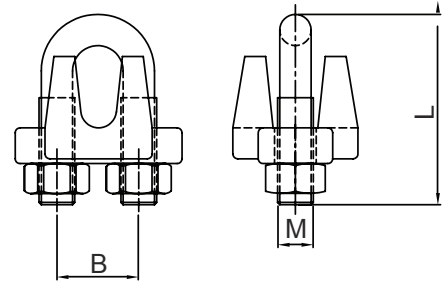


HM-6260

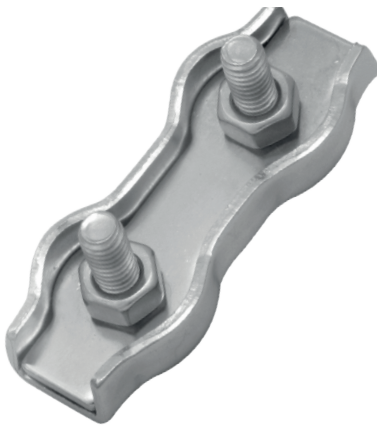
Morsetto a cavalletto

Dati tecnici

Materiale : AISI316 - DIN 1.4408
Materiale : AISI316 - DIN 1.4401



HM-6260 codice	dimensione (mm)	B (mm)	L (mm)	M (filetto)
HM-6260-0003	3	8	21	M3
HM-6260-0004	4	10	23	M4
HM-6260-0005	5	12	29	M5
HM-6260-0006	6	14	32	M6
HM-6260-0008	8	17.5	40	M8
HM-6260-0010	10	21	50	M10

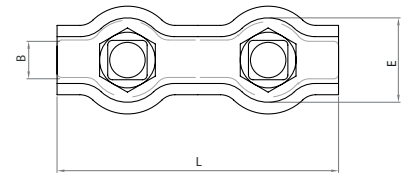


HM-6512

Morsetto Duplex

Dati tecnici

Materiale : AISI316 - DIN 1.4408



HM-6512 codice	dimensione (per fune mm)	B (mm)	E (mm)	L (mm)	M (mm)
HM-6512-0002	2	5	9	30	M4
HM-6512-0003	3	7	11.4	34	M4
HM-6512-0004	4	9.2	13.5	40	M5
HM-6512-0005	5	11	16	50	M5
HM-6512-0006	6	13	19	60	M6
HM-6512-0008	8	17.5	25.5	75	M8

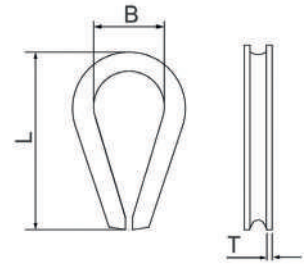


HM-6234

Redancia

Dati tecnici

Materiale : AISI316 - DIN 1.4401



HM-6234 codice	dimensione (mm)	B (mm)	L (mm)	T (mm)	fune Ø (mm)
HM-6234-0002	2	10	25	0.8	2
HM-6234-0003	3	12.5	28.5	1	3
HM-6234-0004	4	13	33	1.2	4
HM-6234-0005	5	15.5	36.5	1.2	5
HM-6234-0006	6	17	40	1.5	6
HM-6234-0008	8	22.5	51	1.5	8
HM-6234-1010	10	26	58.5	2	10
HM-6234-1012	12	31	68	2	12
HM-6234-1014	14	34	74	2.5	14
HM-6234-1016	16	37.5	83	2.5	16
HM-6234-1018	18	40	92	3	18
HM-6234-0020	20	45	104	3	20
HM-6234-0022	22	50.5	115	4	22
HM-6234-0025	25	54	125	4	25

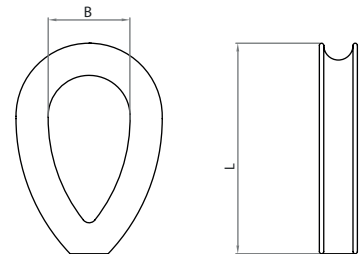


HM-6234

Redancia chiusa

Dati tecnici

Materiale : AISI316 - DIN 1.4408



HM-6234 codice	dimensione (mm)	B (mm)	L (mm)	fune Ø (mm)
HM-6234-4003XS	2.5	10	23	2.5 - 3
HM-6234-4003	3	10	26	3
HM-6234-4004	4	12	32	4
HM-6234-4006	6	16	43	6
HM-6234-4008	8	24	58.5	8
HM-6234-4010	10	28	72	10
HM-6234-4012	12	35	86	12



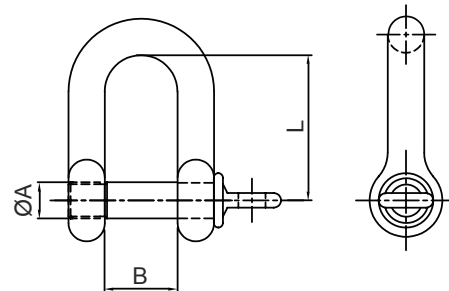
HM-6360CP

Grillo dritto con perno a collare

Dati tecnici

Materiale : AISI316 - DIN 1.4408

Materiale : AISI316 - DIN 1.4401



HM-6360CP codice	dimensione (mm)	ØA (mm)	B (mm)	L (mm)	perno	B.L. (kgs)
HM-6360-0423	3	3	8	12	forgiato	400
HM-6360-0424	4	4	8	16	forgiato	550
HM-6360-4405	5	5	10	20	forgiato	1,000
HM-6360-2006	6	6	12	24	forgiato	1,700
HM-6360-5208	8	8	16	32	forgiato	2,800
HM-6360-0410	10	10	20	40	forgiato	4,500
HM-6360-0412	12	12	24	48	forgiato	6,000
HM-6360-0414	14	14	28	56	fuso	7,000
HM-6360-0416	16	16	32	64	forgiato	10,000



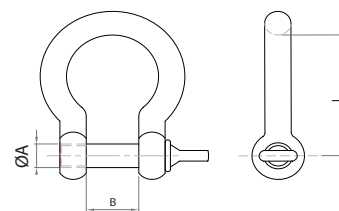
HM-6370CP

Grillo a cuore

Dati tecnici

Materiale : AISI316 - DIN 1.4408

Materiale : AISI316 - DIN 1.4401



HM-6370CP codice	dimensione (mm)	ØA (mm)	B (mm)	L (mm)	perno	B.L. (kgs)
HM-6370-3003	3	3	8	16.5	forgiato	400
HM-6370-3004	4	4	8	20.0	forgiato	550
HM-6370-3005	5	5	10	25.5	forgiato	1,200
HM-6370-3006	6	6	12	30.0	forgiato	1,700
HM-6370-3008	8	8	16	41.0	forgiato	2,500
HM-6370-3010	10	10	20	51.0	forgiato	4500
HM-6370-3012	12	12	24	61.0	forgiato	6,000
HM-6370-3013	13	13	26	66.5	forgiato	6,500
HM-6370-3014	14	14	28	70.0	fuso	7,000
HM-6370-3016	16	16	32	82.0	forgiato	10,000
HM-6370-3019	19	19	38	97.0	forgiato	15,000
HM-6370-3022	22	22	44	110.0	fuso	19,000
HM-6370-3025	25	25	50	125.0	forgiato	23,000
HM-6370-3028	28	28	56	140.0	fuso	26,000
HM-6370-3032	32	32	64	160.0	fuso	38,000

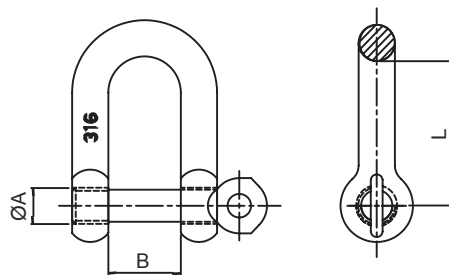


HM-6360LK

Grillo diritto

Dati tecnici

Materiale : AISI316 - DIN 1.4408
Materiale : AISI304 - DIN 1.4301



HM-6360LK codice	dimensione (mm)	ØA (mm)	B (mm)	L (mm)	B.L. (kgs)
HM-6360-5004	4	4.40	8	16	800
HM-6360-5005	5	4.40	10	20	1,000
HM-6360-5006	6	5.25	12	24	1,400
HM-6360-5008	8	7.10	16	32	2,800
HM-6360-5010	10	8.90	20	40	4,000
HM-6360-5012	12	10.70	24	48	6,200

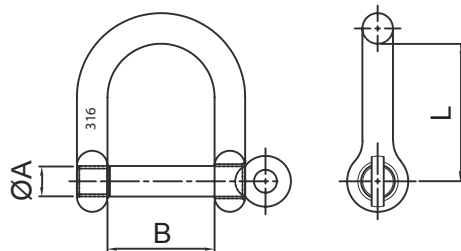


HM-6360

Grillo diritto - wide body

Dati tecnici

Materiale : AISI316 - DIN 1.4408
Materiale : AISI316 - DIN 1.4401



HM-6360 codice	dimensione (mm)	ØA (mm)	B (mm)	L (mm)	B.L. (kgs)
HM-6360-9005	5	5	25	22.5	750
HM-6360-9006	6	6	24	36	1,350
HM-6360-9008	8	8	28	35	2,500
HM-6360-9010	10	10	40	60	3,350

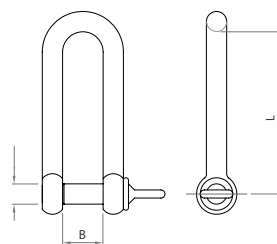


HM-6362CP

Grillo lungo

Dati tecnici

Materiale : AISI316 - DIN 1.4408



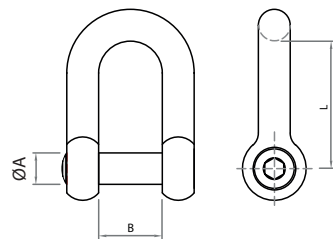
HM-6362CP codice	dimensione (mm)	ØA (mm)	B (mm)	L (mm)	B.L. (kgs)
HM-6362-3004	4	4	8	32	500
HM-6362-3005	5	5	10	40	1,000
HM-6362-3006	6	6	12	48	1,700
HM-6362-3008	8	8	16	64	2,500
HM-6362-3010	10	10	20	80	3,500
HM-6362-3012	12	12	24	96	5,400



HM-6360

Grillo con perno a brugola

Dati tecnici
Materiale : AISI316- DIN 1.4401



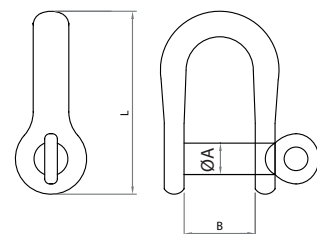
HM-6360 codice	dimensione (mm)	ØA (mm)	B (mm)	L (mm)	B.L. (kgs)
HM-6360-5105	5	5	10	20	1,000
HM-6360-5106	6	6	12	24	1,700
HM-6360-5108	8	8	16	32	2,800
HM-6360-5110	10	10	20	40	4,500
HM-6360-5112	12	12	24	48	6,000



HM-6361

Grillo diritto leggero

Dati tecnici
Materiale : AISI316- DIN 1.4408



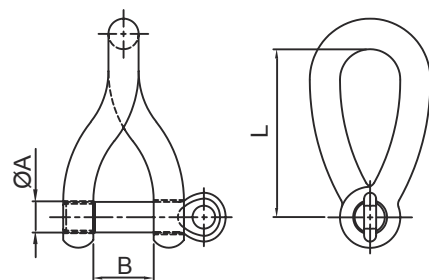
HM-6361 codice	dimensione (mm)	ØA (mm)	B (mm)	L (mm)	B.L. (kgs)
HM-6361-2005	5	5	12	31.2	950
HM-6361-2006	6	6	13	37.0	1,500
HM-6361-2008	8	8	18	46.5	2,600



HM-6380

Grillo ritorto

Dati tecnici
Materiale : AISI316 - DIN 1.4408
Materiale : AISI316 - DIN 1.4401



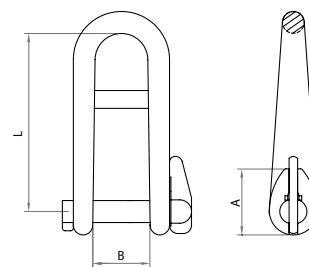
HM-6380 codice	dimensione (mm)	ØA (mm)	B (mm)	L (mm)	B.L. (kgs)
HM-6380-8005	5	5	10	30	1,100
HM-6380-8006	6	6	12	36	1,600
HM-6380-8008	8	8	16	44	2,800
HM-6380-8010	10	10	20	51	4,600



HM-6365

Grillo per drizza con traversino

Dati tecnici
Materiale : AISI316- DIN 1.4408



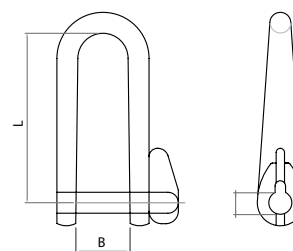
HM-6365DLK codice	dimensione (mm)	A (mm)	B (mm)	L (mm)	B.L. (kgs)
HM-6365-1005	5	5	13	40.50	1,000
HM-6365-1006	6	6	16	46.00	1,600
HM-6365-1008	8	8	22	64.00	2,250



HM-6362

Grillo per drizza

Dati tecnici
Materiale : AISI316- DIN 1.4408



HM-6362 codice	dimensione (mm)	ØA (mm)	B (mm)	L (mm)	B.L. (kgs)
HM-6365-0005	5	5	13	40.50	1,000
HM-6365-0106	6	6	16	46.00	1,600
HM-6365-0008	8	8	22	64.00	2,250

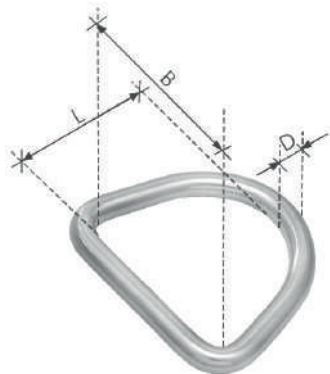
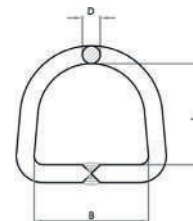


HM-6325

Anello a D

Dati tecnici

Materiale : AISI304 - DIN 1.4301
Materiale : AISI316 - DIN 1.4401



HM-6325 codice	dimensione (mm)	B (mm)	ØD (mm)	L (mm)	B.L. (kgs)
HM-6325-0325	3*25	26	3	22	600
HM-6325-0425	4*25	27	4	22	800
HM-6325-0450	4*50	51	4	43	800
HM-6325-0525	5*25	26	5	22	1,000
HM-6325-0540	5*40	39	5	34	1,000
HM-6325-0550	5*50	52	5	43	1,000
HM-6325-0650	6*50	51	6	43	1,800

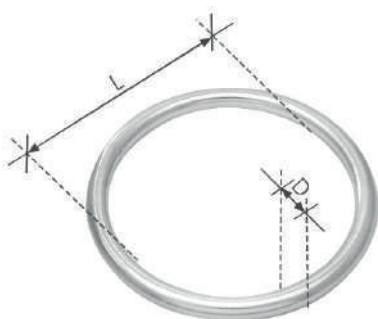
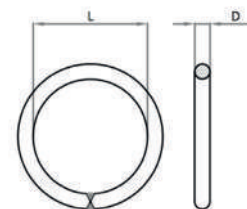


HM-6317

Anello circolare

Dati tecnici

Materiale : AISI304 - DIN 1.4301
Materiale : AISI316 - DIN 1.4401



HM-6317 codice	dimensioni (mm)	ØD (mm)	L (mm)	B.L. (kgs)
HM-6317-0310	3*10	3	10	650
HM-6317-0315	3*15	3	15	650
HM-6317-0320	3*20	3	20	650
HM-6317-0325	3*25	3	25	650
HM-6317-0415	4*15	4	15	1,000
HM-6317-0420	4*20	4	20	1,000
HM-6317-0425	4*25	4	25	1,000
HM-6317-0430	4*30	4	30	1,000
HM-6317-0525	5*25	5	25	2,000
HM-6317-0530	5*30	5	30	2,000
HM-6317-0535	5*35	5	35	2,000
HM-6317-0540	5*40	5	40	2,000
HM-3617-0630	6*30	6	30	2,700
HM-6317-0640	6*40	6	40	2,700
HM-4317-0655	6*55	6	55	2,700
HM-6317-0680	6*80	6	80	2,700
HM-6317-0855	8*55	8	55	5,000
HM-6317-1040	10*40	10	40	8,500
HM-6317-1050	10*50	10	50	8,500

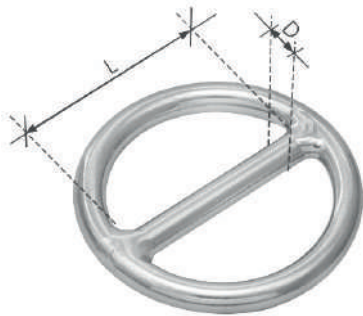
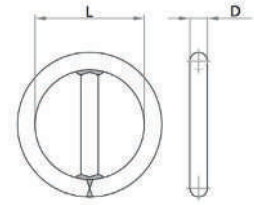


HM-6317

Anello circolare con traversino

Dati tecnici

Materiale: AISI304 - DIN 1.4301
Materiale: AISI316 - DIN 1.4401



HM-6317 codice	dimensioni (mm)	D (mm)	L (mm)	B.L. (kgs)
HM-6317-1150	10*50	10	50	8,500
HM-6317-1126	12*65	12	65	10,000

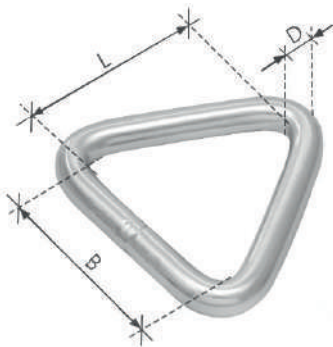
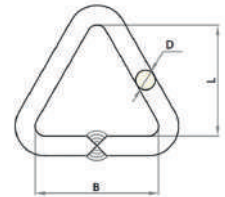


HM-6325

Anello triangolare

Dati tecnici

Materiale: AISI304 - DIN 1.4301
Materiale: AISI316 - DIN 1.4401



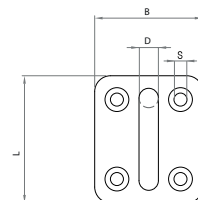
HM-6325 codice	dimensione (mm/inch)	B (mm)	ØD (mm)	L (mm)	B.L. (kgs)
HM-6325-2645	6*45	45	6	40	2,000
HM-6325-2650	6*50	51	6	45	2,000
HM-6325-2850	8*50	50	8	45	2,800



HM-6321

Piastra con occhio-base quadrata

Dati tecnici
Materiale : AISI304 - DIN 1.4301



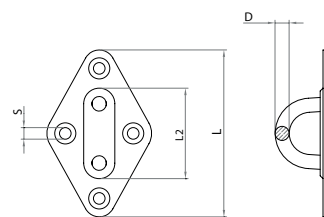
HM-6321 codice	dimensione (mm)	B (mm)	ØD (mm)	L (mm)	ØS (mm)	B.L. (kgs)
HM-6321-0005	5	30	5	34	4.1	700
HM-6321-0006	6	34	6	40	4.1	1,000
HM-6321-0008	8	39	8	50	5.3	1,600



HM-6321

Piastra con occhio-base diamante

Dati tecnici
Materiale : AISI304 - DIN 1.4301



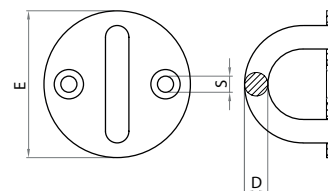
HM-6321 codice	dimensione (mm)	ØD (mm)	L (mm)	L2 (mm)	ØS (mm)	B.L. (kgs)
HM-6321-1005	5	5	59	15	4.1	700
HM-6321-1006	6	6	64	19	4.1	1000
HM-6321-1008	8	8	80	23	5.1	1600



HM-6321

Piastra con occhio-base rotonda

Dati tecnici
Materiale : AISI304 - DIN 1.4301



HM-6321 codice	dimensione (mm)	ØD (mm)	E (mm)	ØS (mm)	B.L. (kgs)
HM-6321-4005	5	5	33	4.5	700
HM-6321-4006	6	6	40	4.5	1,000
HM-6321-4008	8	8	50	5.5	1,600

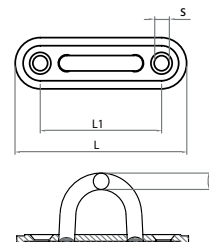


HM-6321

Piastra con occhio-base allungata

Dati tecnici

Materiale : AISI304 - DIN 1.4301



HM-6321 codice	dimensione (mm)	E (mm)	L (mm)	L1 (mm)	ØS (mm)	B.L. (kgs)
HM-4321-2005	5	16	54	38	5	700
HM-4321-2006	6	19	65	46	5.6	1,000
HM-4321-2008	8	25	81	56	6.5	1,600
HM-4321-2009	10	32	100	73	6.5	1,700

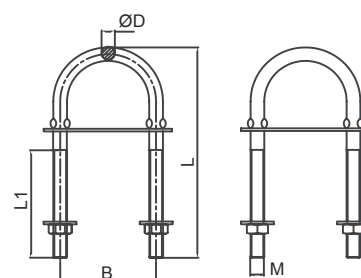


HM-6413

Cavallotto ad U

Dati tecnici

Materiale : AISI304 - DIN 1.4301
Materiale : AISI316 - DIN 1.4401



HM-6413 codice	dimensione (mm)	B (mm)	ØD (mm)	L (mm)	L1 (mm)	M (filetto)
HM-6413-0460	4*60	30	4	62	30	M4
HM-6413-0580	5*80	35	5	78	40	M5
HM-6413-0690	6*90	35	6	90	45	M6
HM-6413-0880	8*80	35	7	80	40	M8
HM-6413-0810	8*100	35	7	100	50	M8
HM-6413-1090	10*90	50	10	90	40	M10
HM-6413-1013	10*130	50	10	130	55	M10
HM-6413-1215	12*150	60	12	150	65	M12

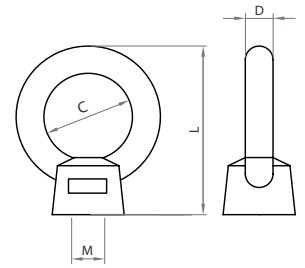


HM-6306

Golfare femmina

Dati tecnici

Materiale : AISI316- DIN 1.4408



HM-6306 codice	dimensione (mm)	ØC (mm)	ØD (mm)	L (mm)	M (filetto)	B.L. (kgs)
HM-6306-1006	6	16	5	31	M6	1,100
HM-6306-1008	8	20	6.2	39.3	M8	1,300
HM-6306-1010	10	25	8	48	M10	2,600
HM-6306-1012	12	30	10	61	M12	3,500

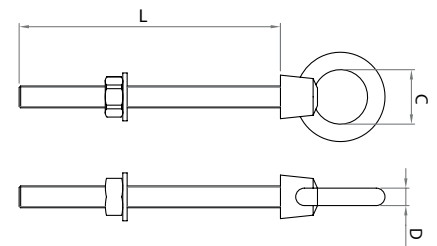


HM-6307

Bullone occhio fisso

Dati tecnici

Materiale : AISI316- DIN 1.4408



HM-6307 codice	dimensione (mm)	ØC (mm)	ØD (mm)	L (mm)	M (filetto)	B.L. (kgs)
HM-6307-0660	60	16	5	60	M6	1,100
HM-6307-0680	80	16	5	80	M6	1,100
HM-6307-0880	80	20	6.2	80	M8	1,300
HM-6307-0810	100	20	6.2	100	M8	1,300
HM-6307-1010	100	25	8	100	M10	2,600
HM-6307-1210	100	30	10	100	M12	3,500



HM-6506-R / HM-6506-L

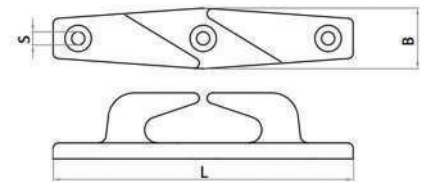
Passacavo

Dati tecnici

Materiale : AISI316- DIN 1.4408

R = Filettatura a destra (RHT)

L = Filettatura a sinistra (LHT)



HM-6506-R codice	HM-6506-L codice	dimensione (inch)	B (mm)	L (mm)	S (mm)
HM-6506-2412	HM-6506-1412	4.5	23	114	5
HM-6506-2006	HM-6506-1006	6	34	150	6

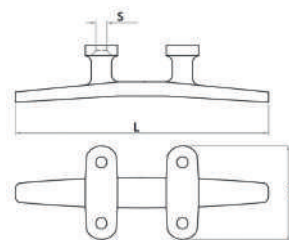


HM-6505

Bitta leggera

Dati tecnici

Materiale: AISI316- DIN 1.4408



HM-6505 codice	dimensione (inch)	E (mm)	L (mm)	ØS (mm)
HM-6505-0004	4	36	100	4.5
HM-6505-0005	5	46	125	5.5
HM-6505-0006	6	53	150	6.5
HM-6505-0008	8	68	200	8.5
HM-6505-0010	10	82.5	250	8.5
HM-6505-0012	12	82.5	300	8.5

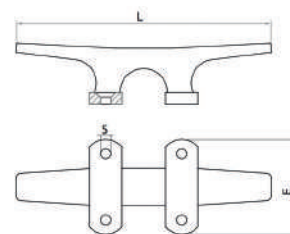


HM-6505

Bitta pesante

Dati tecnici

Materiale: AISI316- DIN 1.4408



HM-6505 codice	dimensione (inch)	E (mm)	L (mm)	ØS (mm)
HM-6505-5060	6	56	150	6
HM-6505-5007	7	60	180	6

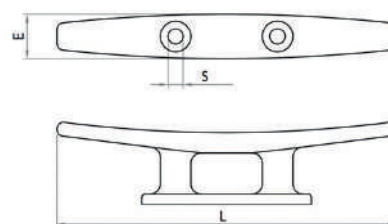


HM-6507

Bitta forata

Dati tecnici

Materiale: AISI316- DIN 1.4408



HM-6507 codice	dimensione (inch)	E (mm)	L (mm)	ØS (mm)
HM-6507-0004	4	8	100	4.5
HM-6507-0005	5	9	125	5.5
HM-6507-0006	6	12	150	6.5
HM-6507-0008	8	15	200	8.5
HM-6507-0010	10	16	250	8.5

Produzione di funi metalliche

Funi in acciaio inossidabile

Le funi fornite da Cablesteel per il settore nautico sono realizzate con materie prime di altissima qualità secondo le specifiche AISI. Il nostro processo produttivo garantisce funi prive di impurità come polvere e grasso che sono la principale causa di prematura opacizzazione e corrosione.

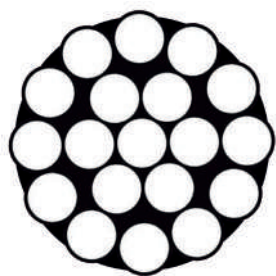




Le nostre funi offrono alte prestazioni, mantenendo un adeguato rapporto qualità/prezzo e sono ampiamente utilizzate per la realizzazione di sartie per gli yacht, di pendini per strutture leggere ed elementi strutturali.

Fune 1x19

La fune 1x19 è costituita da un trefolo composto da 19 fili.
E' un cavo rigido e adatto per il sartame, stralli, balaustre, tiranti e applicazioni strutturali.



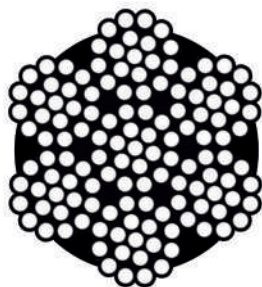
Campi di applicazione:

- Architettonico
- Tensostrutture
- Navale
- Sartame per yacht
- Settore offshore (Oil&Gas)
- Ingegneria sottomarina

Dimensione (mm)	Costruzione	MBS (kgs)	MBS (kN)	Peso p/m (kg)
2	1x19	336	3.3	0.020
2.5	1x19	525	5.1	0.031
3	1x19	756	7.4	0.045
4	1x19	1,340	13.1	0.080
5	1x19	2,100	20.6	0.126
6	1x19	3,030	29.7	0.180
7	1x19	4,120	40.4	0.248
8	1x19	5,380	52.8	0.318
10	1x19	8,400	82.5	0.511
12	1x19	12,102	119.0	0.739
14	1x19	16,473	152.0	0.965
16	1x19	20,500	211.0	1.314
19	1x19	30,300	298.0	1.781
20	1x19	33,650	330.0	1.966
22	1x19	40,687	399.0	2.404

Fune 7x19

La fune 7x19 è composta da 7 trefoli costituiti a loro volta da 19 fili.
E' una fune metallica flessibile e versatile.



Campi di applicazione:

- Balaustre
- Tensostrutture
- Navale
- Sartame per yacht
- Settore offshore (Oil&Gas)

Dimensione (mm)	Costruzione	MBS (kgs)	MBS (kN)	Peso p/m (kg)
2	7x19	239	2.3	0.017
2.5	7x19	373	3.7	0.025
3	7x19	538	5.3	0.037
3.5	7x19	732	7.2	0.052
4	7x19	956	9.4	0.067
5	7x19	1,490	14.6	0.104
6	7x19	2,105	20.6	0.150
7	7x19	2,800	27.4	0.208
8	7x19	3,400	33.3	0.262
10	7x19	5,310	52.1	0.424
12	7x19	7,650	75.0	0.597
14	7x19	10,400	102.0	0.790
16	7x19	13,600	133.0	1.075
19	7x19	19,300	189.3	1.438
20	7x19	21,210	208.0	1.628
22	7x19	25,700	252.0	1.969
24	7x19	30,600	300.0	2.368
26	7x19	36,000	353.0	2.758
28	7x19	41,800	409.0	3.156
32	7x19	54,500	535.0	4.087



hama[®]

CableSteel
GROUP

Fune 1x7 compattata

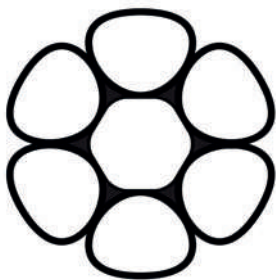
FUNI COMPATTATE

La fune, grazie alla compattazione de trefoli, non necessita di prestiratura.
Il processo di compattazione del trefolo infatti riduce il fenomeno dell'allungamento dei fili.



Campi di applicazione:

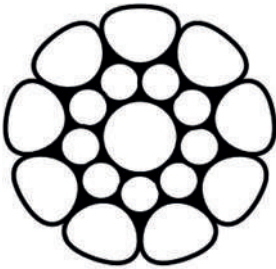
- Architettonico
- Tensostrutture
- Navale
- Sartiami per yacht
- Settore offshore (Oil&Gas)
- Ingegneria sottomarina



Dimensione (mm)	Costruzione	MBS (kgs)	MBS (kN)	Peso p/m (kg)
2	1x7	450	4.4	0.024
2.5	1x7	700	6.9	0.036
3	1x7	1,025	10.1	0.055
3.5	1x7	1,375	13.5	0.075
4	1x7	1,800	17.7	0.098

Fune 1x19 compattata

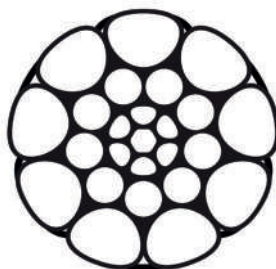
FUNI COMPATTATE



Dimensioni (mm)	Costruzioni	MBS (kgs)	MBS (kN)	Peso p/m (kg)
5	1x19	2,600	25.5	0.156
6	1x19	3,700	36.3	0.218
7	1x19	5,100	50.0	0.291
8	1x19	6,500	63.7	0.381
10	1x19	10,250	100.5	0.599
12	1x19	14,400	141.2	0.810

Fune compattata 1x25

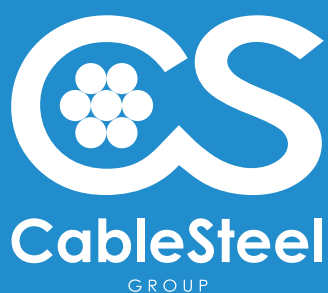
FUNI COMPATTATE



Dimensione (mm)	Costruzione	MBS (kgs)	MBS (kN)	Peso p/m (kg)
14	1x25	19,300	189.7	1.142
16	1x25	25,600	251.7	1.494
19	1x25	32,000	314.6	2.105



Distributed by:



Cablesteel Group | Cables Division
Via Statale, 5
25011 Calcinato - Brescia, Italy
T. +39 030 9133460
info@cablesteel.it

www.cablesteel.it